

- ✓ All component materials can be manufactured from Poly composites, steel, and alloys, including stainless steel.



LOV

- ✓ Components can be coated with to reduce friction at the support/pipe interface to 0.1.



Load Test

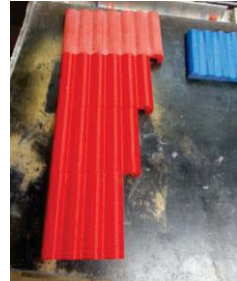
- ✓ All our products can be mounted on spring can load plates.



LOH

- ✓ Excellent electrical resistivity properties.

- ✓ "Lift-Off" product range can be manufactured from carbon, high and low alloy, stainless steels, carbon and polymer composites.



LOR (various sizes)

- ✓ "Lift-Off" pipe supports DO NOT require any hot work to install (in most cases).

- ✓ No limits on configurations i.e. guides, line stops, etc., the line is always sitting on the Lift-Off base.

- ✓ Used for acoustic and vibration reduction.

- ✓ Low coefficient of friction: $\mu=0.05$ to 0.2.

- ✓ Other coatings i.e. Teflon™, powder coatings, galvanizing, etc., can also be applied to client's specification.

- ✓ Increased pipe support lifespan compared to similar products.

- ✓ Our products carry the full documentation, material traceability and identification.

"Call today".

+1-337-515-8590



"Lift-Off"
Pipe Supports®
All rights Reserved

2524 Edgewood Lane
Lake Charles, LA 70605

<http://www.liftoffpipe.com/>
[Email: martin@liftoffpipe.com](mailto:martin@liftoffpipe.com)

All Products manufactured in the USA.

Member: LCIA, ASME, MTS, SWLA, SNAME

"Lift-Off" Pipe Supports
Trade Mark™



"Lift-Off"
Pipe Supports®

A "500 Projects" LLC Company

The Pipe Support Specialists

Our mission is to provide our customers with world class 21st century solutions to their pipe support needs.

This patented solution is unprecedented.

They will lower your short and long-term costs by avoiding expensive piping installation and replacement costs, by mitigating corrosion at pipe supports contacts.

Tel: +1 (337)-515-8590

**Best-Practice Engineering
Saves Billions of Dollars**



A U.S. corrosion cost study has determined that incorporating the latest corrosion control strategies still requires widespread changes in industry management and government policies as well as additional advances in science and technology.



Implementation of best-practice engineering in every sector could save billions of dollars.

(Extract from NACE Publication No. FHWA-RD-01-156)



"Lift-Off" pipe support systems are developed to increase the life span of piping systems by reducing crevice corrosion.

The "Lift-Off" design is a "patented pipe support system" that increases fluid drainage, thereby reducing corrosion and fluid hang-up, a major cause of coating blistering and degradation.

"Lift-Off" also has the advantage of distributing the pipe load over a larger area, thereby reducing stress on the coating.

We estimate the average load area has been increased by a minimum of 4 times therefore reducing the cost of replacing the lines.

Our range of products are available to the Marine, Oil and Gas, Chemical, Pharmaceutical piping industry where ease of installation, corrosion mitigation is a major factor.



Our Products and Applications

LOB (Lift-Off Beam)



For lines 8" and above.

LOH (Lift-Off Hurricane)



LOH - For lines 1" to 4".

LOV (Lift-Off Vertical Support)



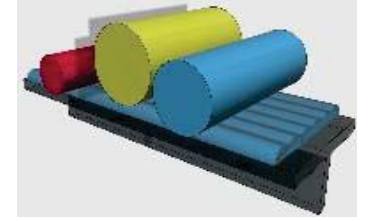
LOV - For lines, up to 6".

LORAN (Lift-Off Angle)



LORAN-Used for angle and small str. sections.

LOR (Lift-Off Rest)

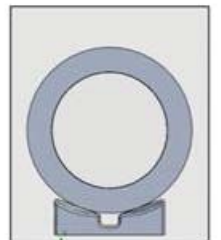
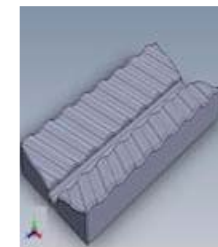


LOR- Made to suit beams. LORs can be used for cable racks as well.

LOCH (Lift-Off Clamp/Hanger)



LOCH-Used for Clamp and Hangers.



Noting our designs it's easy to see the corrosion prevention solutions we provide.

Full installation instructions are necessary and provided. Tools are supplied with each support.